

# EVO Australia

## EVO TEN

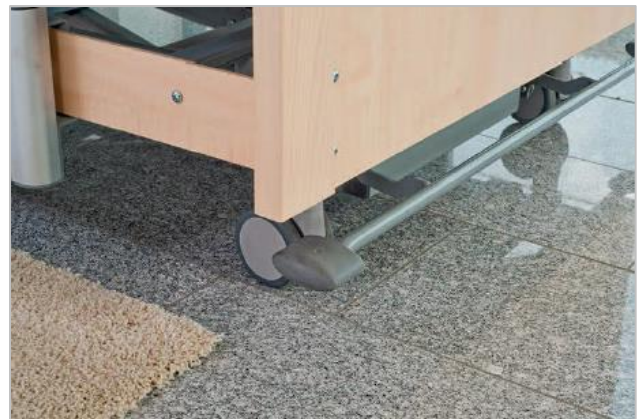


All in one healthcare bed



### As standard

- Delivered full assembled
- 4-section steel mesh platform base 89x200 cm with mattress guidance at head- and footrest.
- All metal work powder coated in pearl dark grey RAL 9023
- Electrically operated back rest to 70° and knee break function to 30°
- Mechanical height adjustment of footrest in 6 positions
- Electrically operated height adjustment 24-80 cm, stroke 56 cm
- 4 x castors 100 mm, with central brake
- Full wood cover panel light beech decor, frame et sideguard light beech decor, various other decors possible on demand
- 24 Volt motor system
- 11 buttons handset with single fault safety and locking device
- Comfort position
- Position Trendelen-/Antitrendelenburg
- In compliance with IEC 60601-2-52
- Protection class IPX4
- Max. Patient weight: 200 KG
- Safety working load: 235 KG

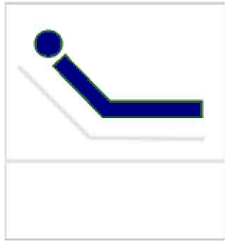


**Standard Central Braking System**

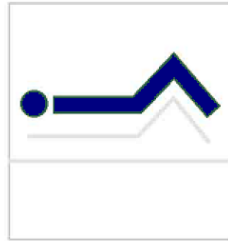
### As option

- Bed extension + 20 cm
- Lifting pole with triangle hand grip
- Aluminium side rails with safety locking
- Side rails bumper
- Reading lamp
- Underbedlight with IR-Sensor
- Split siderails
- Knee break function to 45°

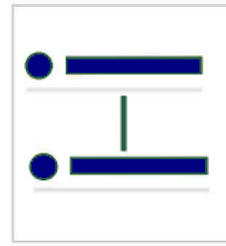
# TECHNICAL SPECIFICATION



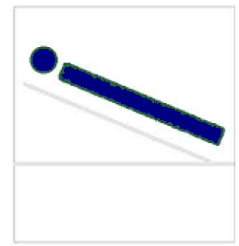
0-70 °  
Backrest



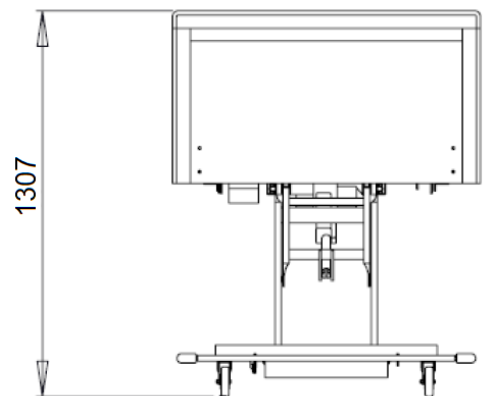
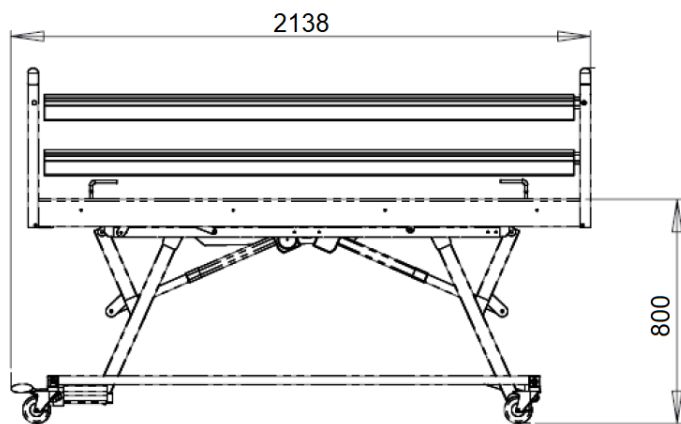
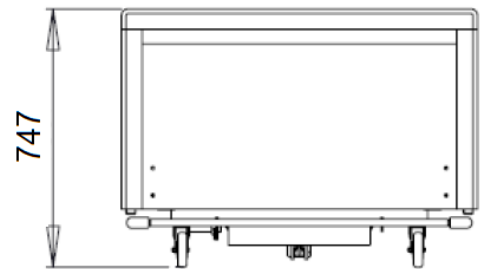
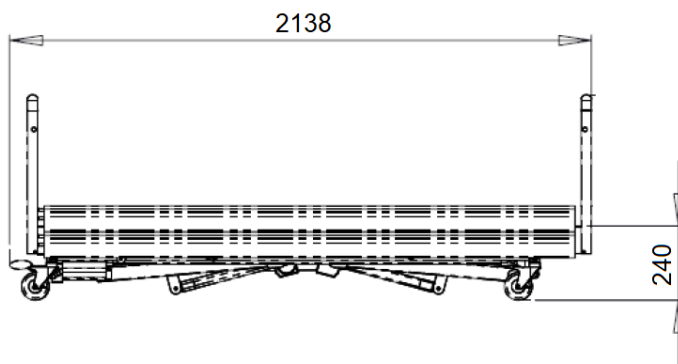
0-30 °  
Footrest



24-80 cm  
Height adjustment



Trendelenburg /  
Antitrendelenburg





# EVO Australia



[www.evoaustralia.com.au](http://www.evoaustralia.com.au)



1800 771 381



[sales@codacare.com.au](mailto:sales@codacare.com.au)